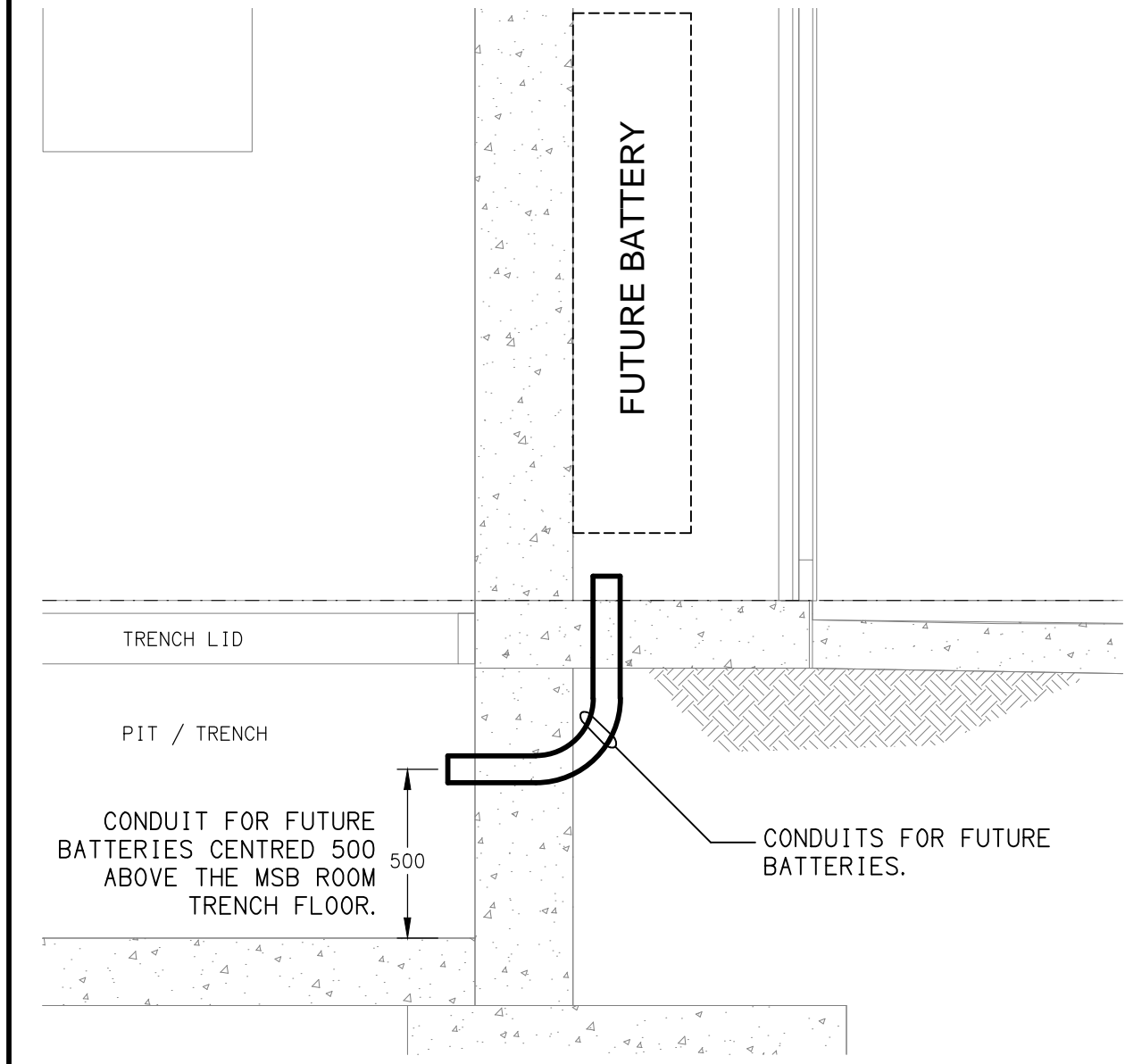
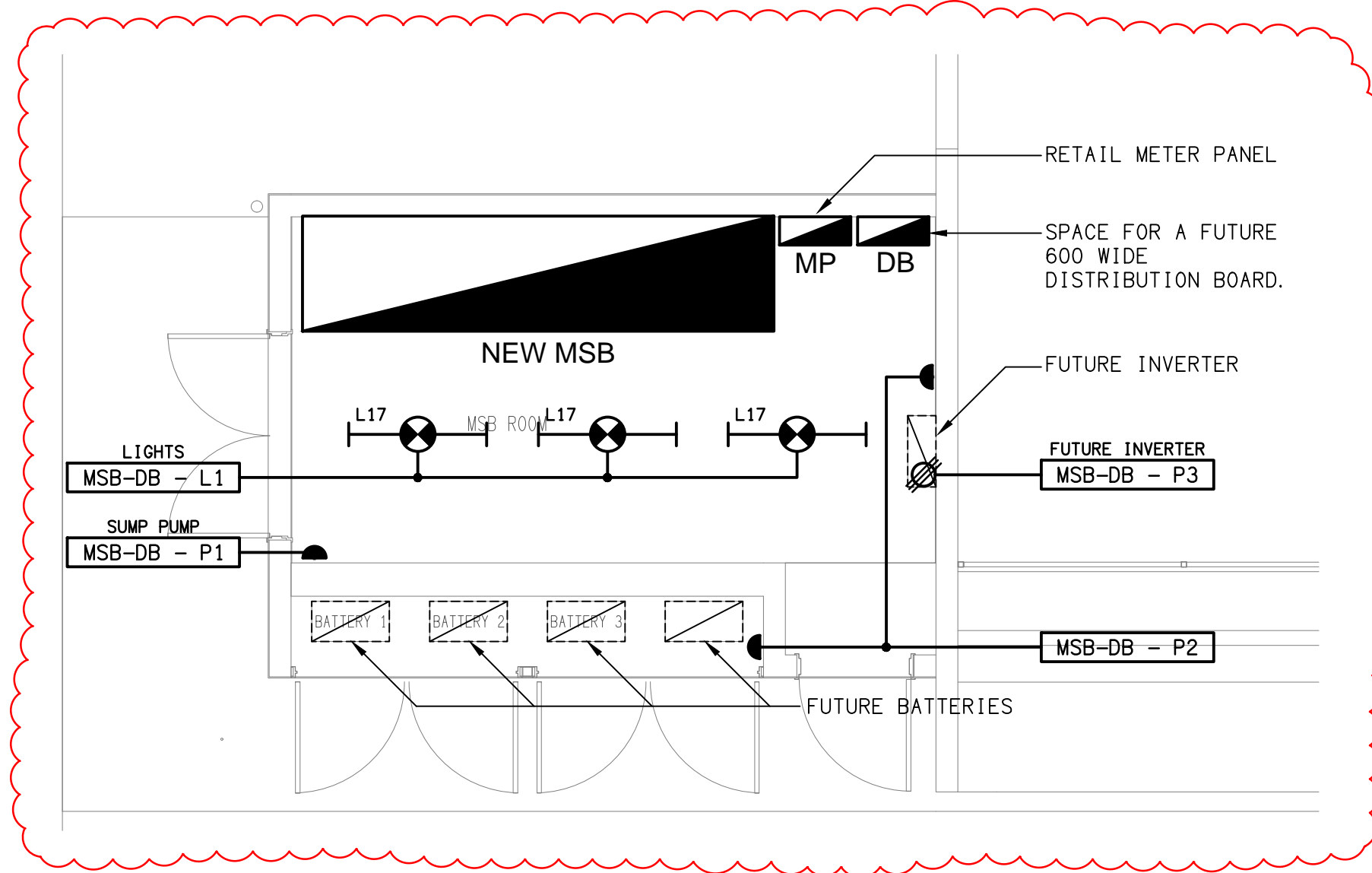


**NOTE:**  
THE DEPTH OF THE CONDUITS ENTERING THE NEW MSB ROOM IS NOT CRITICAL OTHER THAN THE TOP OF THE UPPER MOST CONDUIT MUST MAINTAIN A MINIMUM DEPTH OF COVER OF 500mm AS PER AS3000.



**DETAIL A**  
FUTURE BATTERY CONDUIT SECTION  
SCALE 1: 20



**DETAIL B**  
MSB ROOM ELECTRICAL PLAN  
SCALE 1: 50